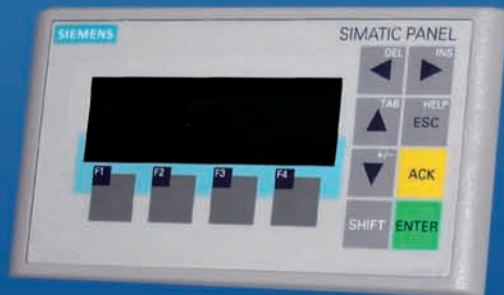


FMO-7A



- „stainless steel” version of roller mills also available



The FP SPOMAX's 4-roll roller mills, model FMO-7A, is ideal for milling wheat, corn, rye and barley; an 8-roll roller mill, model FMO-8A, with double milling stage ensures high grinding output and good flour quality. During design of the new generation roller mills high priority has been given to safety and sanitation, with the full opening front giving easy access for cleaning of the interior surfaces. Also with the introduction of the ATEX regulations electrical connections are enclosed in a separate explosion proof enclosure.

Application

Roller mills FMO-7A and FMO-8A are used for grinding and crushing of cereal grains. They are designed to obtain flour and semolina in the flour and semolina mills.

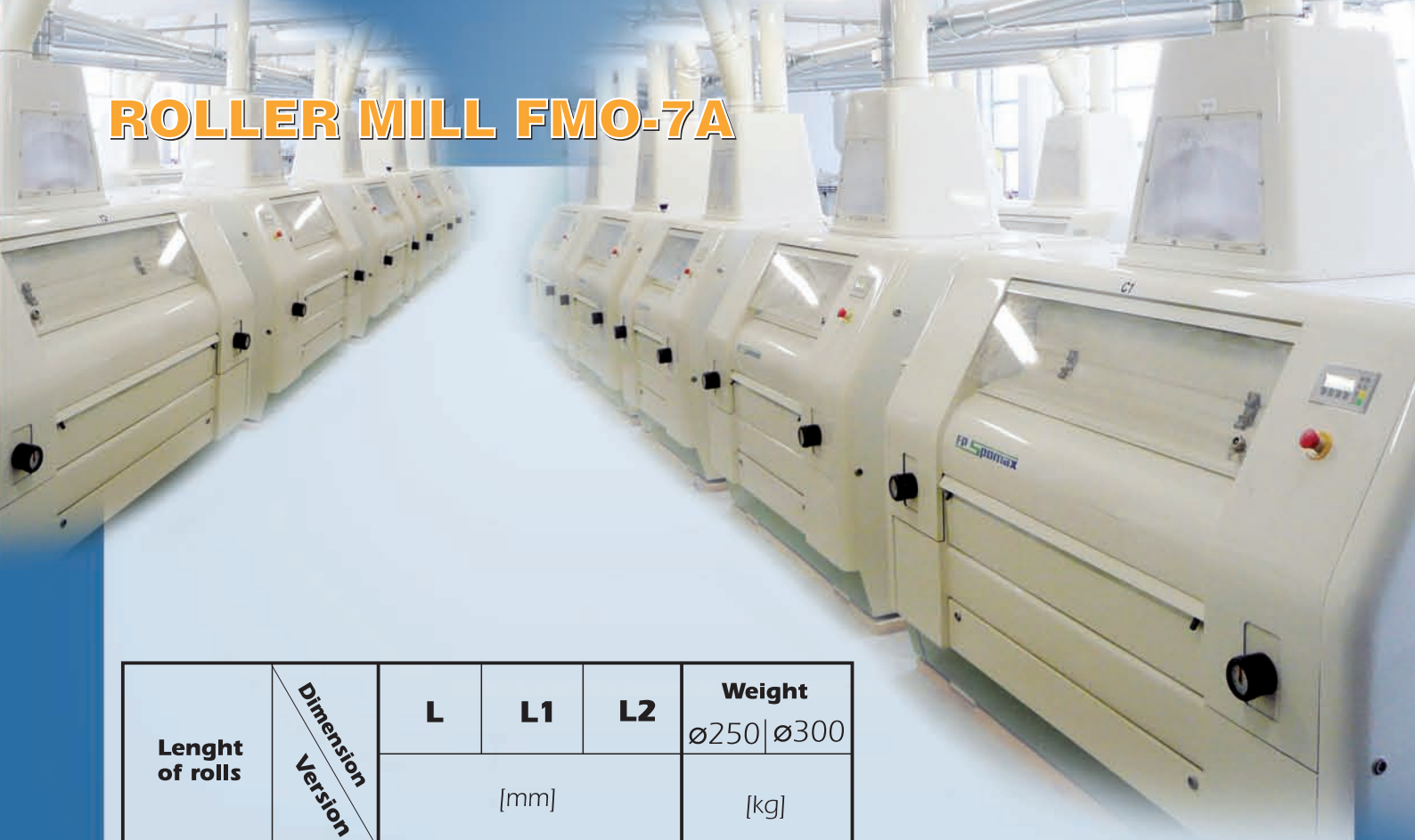
FMO-8A



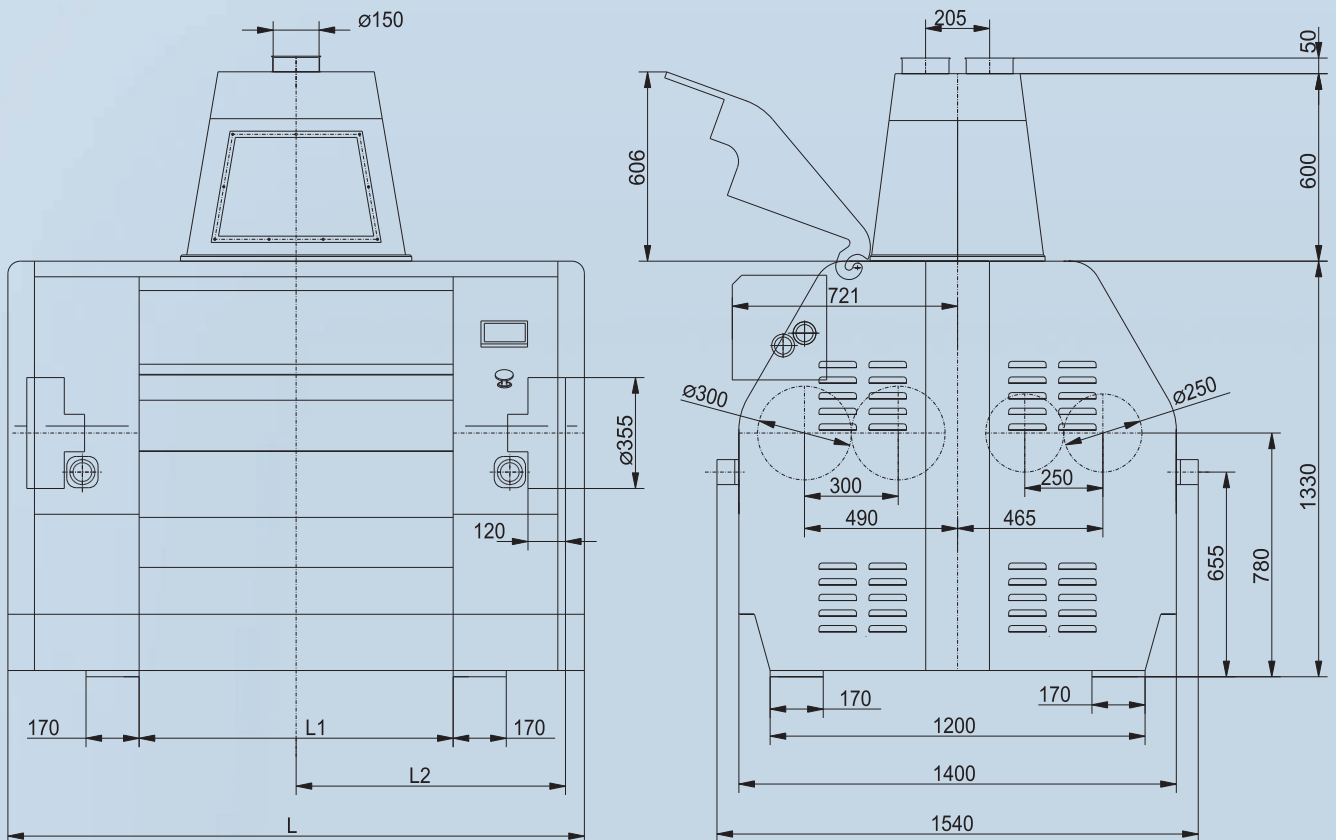
- modern body design
- automatic adaptation for changeable milling conditions on different passages
- precise and repeatable milling
- reliable and dependable functioning
- high safety and occupational hygiene
- good ergonomics and operating comfort
- reduced maintenance costs
- automatic milling process
- adjusted for computer control
- inlet feed tube designed to give optimum distribution of stock across the full width of the feed-rolls and therefore the main grinding rolls
- full length capacitance probe controls the speed of the feed rolls according to the level of material within the "sight glass" and controls engage/disengage of the main grinding rolls
- modern operating panel enable reading and setting of selected parameters as well as servicing
- full height front door easy and quick to open; good access to inside of roller mill allows cleaning of roller mill interior as well as feed and milling rolls
- simple, easily removable feed-roll "pack"
- easy access to the milling rolls facilitates roll changes and reduces replacement time
- efficient air flow in feed, milling and other working areas ensures dust as well as warm and damp air removal, reducing condensation possibility & limiting mould and insects growth
- smooth and quiet operation of roller mill;
- structural rigidity is maintained by bolting the main roll bearing housings directly to the rigid base
- safety - access to moving parts restricted by lockable covers
- new belt drive differential transmission (gear transmission optional)
- manufactured according to U.E. directives, including ATEX
- option of remote milling gap regulation



ROLLER MILL FMO-7A



Length of rolls	Dimension Version	L	L1	L2	Weight	
		[mm]			ø250	ø300
					[kg]	
800	1	1685	805	762	2710	3100
1000	2	1885	1005	862	2950	3400
1250	3	2135	1255	987	3300	3820

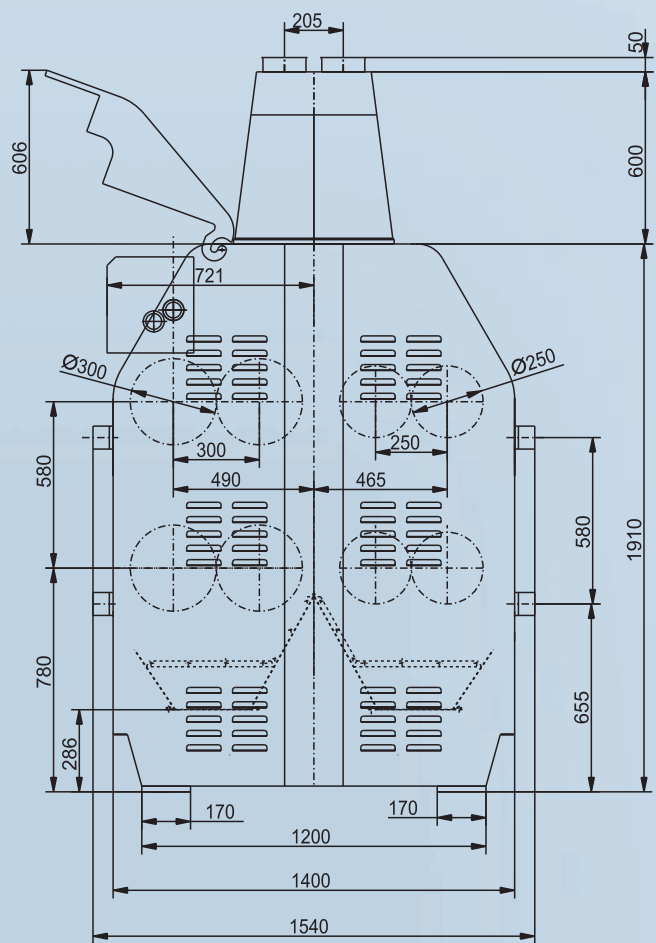
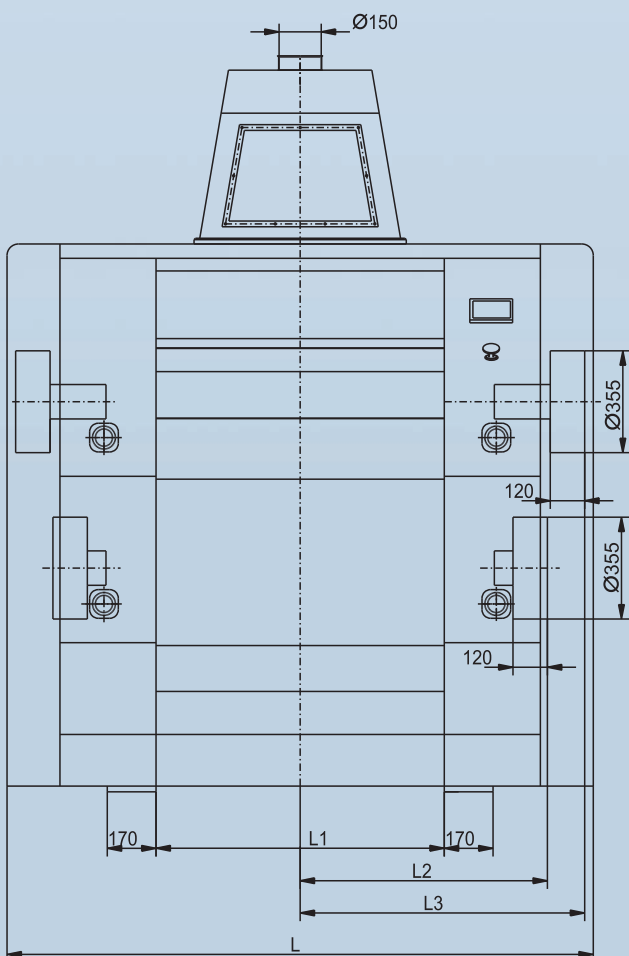


Electric power parameters of control desk and automatic (standard): 1x230V, 50-60Hz.

ROLLER MILL FMO-8A



Length of rolls	Version	Dimension				Weight	
		L	L1	L2	L3	Ø250	Ø300
		[mm]				[kg]	
800	1	1845	805	762	892	4500	5330
1000	2	2045	1005	862	992	4950	5930
1250	3	2295	1255	987	1117	5450	6600



Electric power parameters of control desk and automatic (standard): 1x230V, 50-60Hz.

Manufacturer reserves the right for modifications of parameters and devices appearance in the course of its improvement.