

PIN MILL



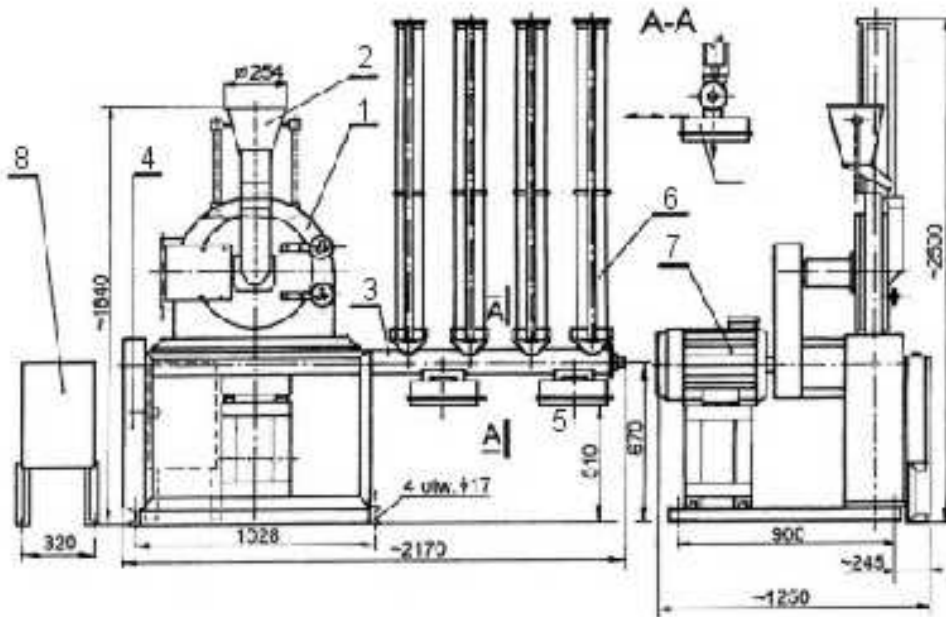
Universal Pin Mill RT-1 is ideal for fine and very fine grinding of low humidity, brittle, non-abrasive products, up to a max. Mohs hardness of 3. The fineness and efficiency of the grinds depends on characteristics of the material for milling and on configuration and speeds of grinding elements. The standard version of the grinder is equipped with stroke pins, attached concentrically to the driven disc and to the fixed disc. On the base of this mill we can make grinding machines of turbo type with screens especially suitable for fibrous materials or mills with other grinding media, according to customer requirements. A large hinged door, electrically interlocked, offers easy access to the chamber and grinding elements.

Application

- Materials with crystalline and quasi-crystalline structure: salt, sugar, potassium carbonate, citric, etc.
- Herbs, flavorings and dried vegetables: caraway, pepper, rowan-berry, coriander seeds, marjoram, root crops, etc.
- Cosmetics and pharmaceuticals products
- Grain and full-grain products
- Cacao, coffee-beans, tea
- Other raw materials: Arabic gum, casein, dried blood, etc.

Technical data

- capacity: 150-600 kg/h
- power rating: 11 kW
- revolutions of disc: 4300 rpm
- weight: 415 kg



- 1 - body
- 2 - inlet system with magnetic separator
- 3 - worm conveyor
- 4 - drive unit of the conveyor
- 5 - outlet
- 6 - filtration sleeves
- 7 - motor
- 8 - control box

Manufacturer reserves the right for modifications of parameters and device appearance in the course of its improvement.